

# HIGH DENSITY CARD EDGE

.050" [1.27] HIGH DENSITY PCI CONNECTOR



## SPECIFICATIONS

### Material:

**Insulator:** Polyphenylene Sulfide (PPS), glass-reinforced thermoplastic, rated UL 94V-0

**Insulator color:** Dark Brown (120 Pos: White)

**Contacts:** Phosphor Bronze

### Plating:

5 µin gold nom. over 50 µin nickel underplate

### Electrical:

**Operation voltage:** 125 VAC max

**Current rating:** 1 Amps max

**Contact resistance:** 20 mΩ max

**Insulation resistance:** 1000 MΩ min @ 500 VDC between adjacent contacts (75°F and 50% R.H.)

**Dielectric withstanding voltage:** 500 VAC min rms (sea level)

**Voltage drop:** 30 mV max

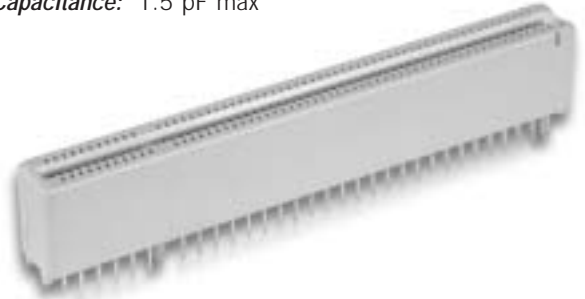
**Capacitance:** 1.5 pF max



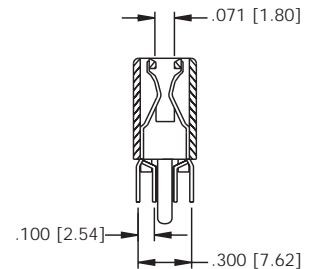
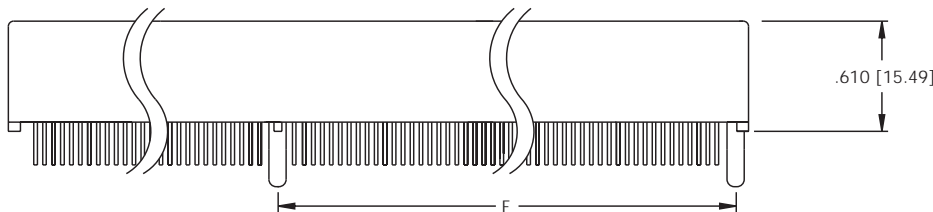
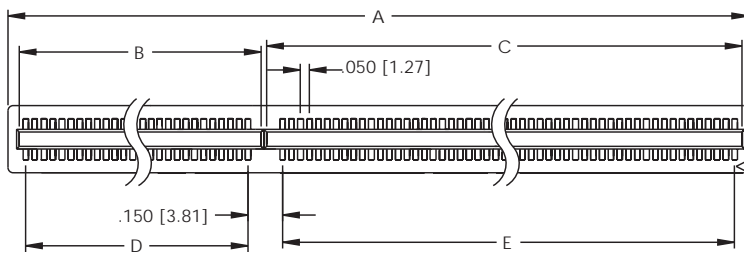
## ORDERING INFORMATION

choose one from each category as shown in sample below

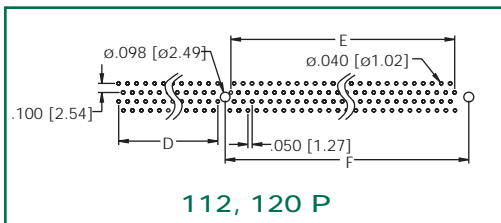
PCI Series	B Peg Type	120 Positions
PCI - .050" Hi-Density Edge Card	A - Plastic pegs B - Metal boardlocks	112, 120, 132, 182, 184, 194



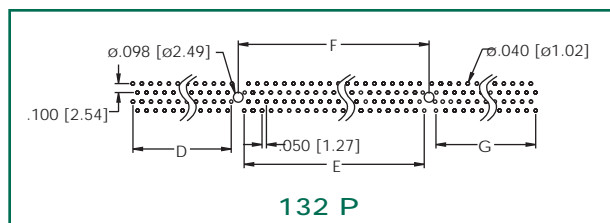
## PCI EDGE CARD



## PC BOARD LAYOUT



112, 120 P



132 P

Unit: Inch / mm

### Dimensional:

CONTACTS	A	B	C	D	E	F	G
112	3.140 (79.76)	0.625 (15.88)	2.325 (59.06)	0.500 (12.70)	2.200 (55.88)	2.232 (56.69)	—
120	3.340 (84.84)	0.625 (15.88)	2.525 (64.14)	0.500 (12.70)	2.400 (60.96)	2.550 (64.77)	—
132	3.740 (95.00)	0.625 (15.88)	2.925 (74.30)	1.834 (46.60)	2.200 (55.88)	2.350 (59.69)	0.450 (11.43)
182	4.890 (124.21)	2.175 (55.25)	2.525 (64.14)	2.050 (52.07)	2.400 (60.96)	2.550 (64.77)	—
194	5.290 (134.37)	2.175 (55.25)	2.925 (74.30)	2.050 (52.07)	2.200 (55.88)	2.350 (55.88)	0.450 (11.43)