

# EDGE CARD CONNECTOR

.100" X .200" CENTERLINE



## SPECIFICATIONS

### Material:

**Insulator:** PBT, glass reinforced thermoplastic, rated UL 94V-0  
**Contacts:** Phosphor Bronze

### Plating:

5 µin gold on contact area and 100 µin tin-lead on solder-tails

### Electrical:

**Operation voltage:** 250 VAC max  
**Current rating:** 3 Amp max  
**Contact resistance:** 20 mΩ max  
**Insulation resistance:** 1000 MΩ min @ 1000 VDC between adjacent contacts (75°F and 50% R.H.)  
**Dielectric withstanding voltage:** 1000 VDC min rms (sea level)

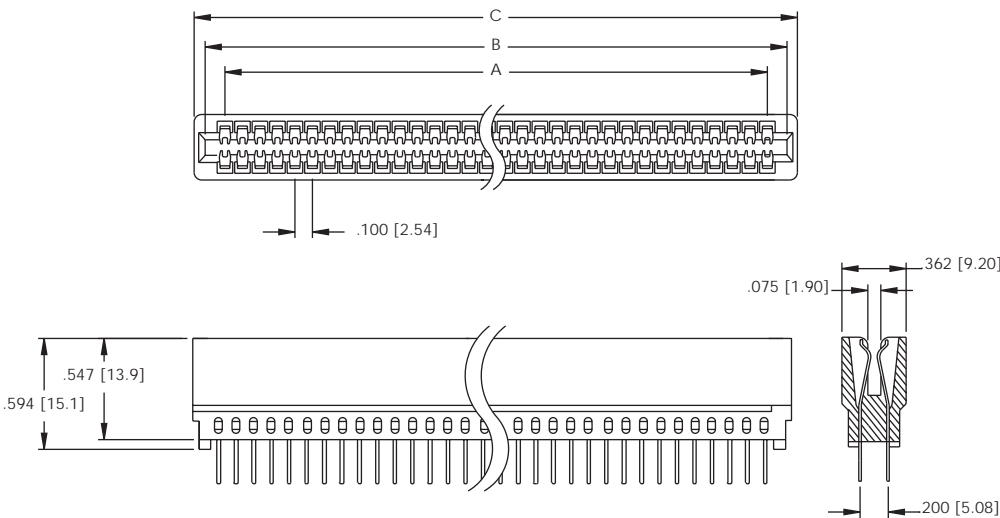


## ORDERING INFORMATION

choose one from each category as shown in sample below

EC Series	Positions	Options <i>(add as suffix to part number)</i>
EC - .100" x .200" Edge Card Connector	18, 30, 32, 36, 40, 44, 50, 60, 62, 80, 98, 100	H - Hi-Temp Insulator PF - Press Fit Pins
ECR - .100" x .200" Edge Card Connector Right Angle		Right Angle Only Dimension D: 1 = 3.0   2 = 3.81   3 = 5.08

## EC SERIES EDGE CARD CONNECTOR



A = .100" [2.54] x No. of Spaces  
 B = .100" [2.54] x No. of Spaces + .200" [5.08]  
 C = .100" [2.54] x No. of Spaces + .375" [9.53]

