

# D-SUB

## CONNECTOR BODY & CRIMP CONTACT

### SPECIFICATIONS

#### Material:

**Shell:** Steel, tin-plated  
**Insulator:** PBT, glass reinforced thermoplastic, rated UL 94V-0  
**Insulator color:** Black  
**Contacts:** Phosphor Bronze  
**Hardware:** Brass, nickel plated

#### Plating:

5 µin gold on contact area over 50 µin nickel underplate, gold flash on solder-pins

#### Electrical:

**Operation voltage:** 600 VDC max  
**Current rating:** 5 Amps max  
**Contact resistance:** 20 mΩ max  
**Insulation resistance:** 5000 MΩ min @ 1000 VDC between adjacent contacts (75° F and 50% R.H.)  
**Dielectric withstanding voltage:** 1000 VAC min rms (sea level)



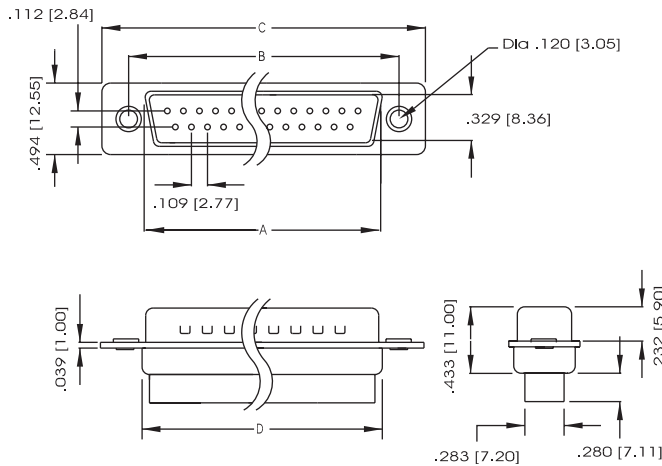
### ORDERING INFORMATION

choose one from each category as shown in sample below

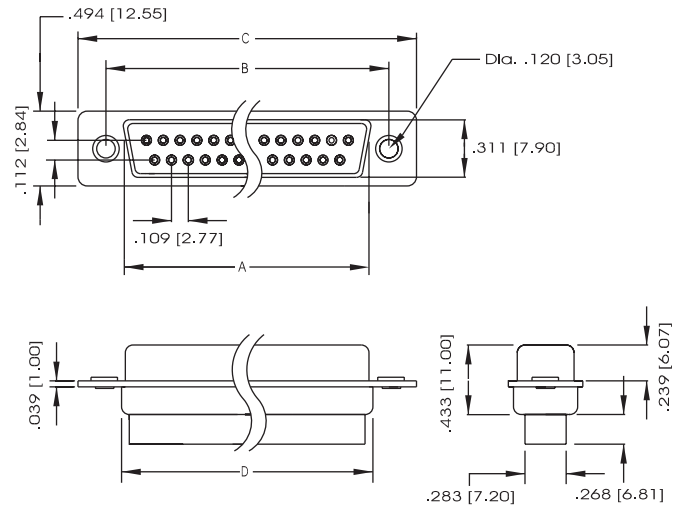
DC	25P	Options (add as suffix to part number)
<b>Series</b>	<b>Positions/Gender</b>	<b>CN</b> - Clinch nut <b>RJ</b> - Riveted Jack Screw
<b>DC</b> D-Sub Connector Body and Crimp Contact	<b>Plug:</b> 9P, 15P, 25P, 37P, 50P <b>Socket:</b> 9S, 15S, 25S, 37S, 50S	<b>Crimp Contact Part No.</b> <b>Plug Contact:</b> CP-1 <b>Socket Contact:</b> CS-1 <b>Add Suffix</b> - L for 1000 pcs loose in bag - R for 5000 pcs chain reel 1 = 22AWG 2 = 24AWG 3 = 30AWG



#### PLUG BODY



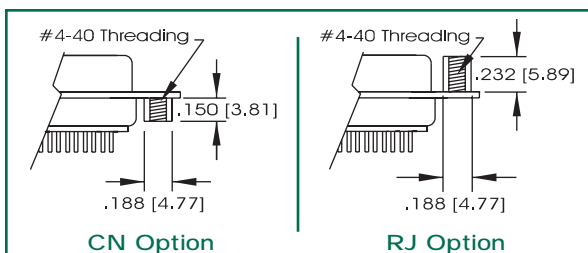
#### SOCKET BODY



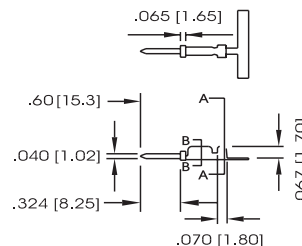
Dimensional: Socket Assembly				Dimensional: Plug Assembly			
Contacts	A	B	C	Contacts	A	B	C
9	.643 (16.33)	.984 (24.99)	1.213 (30.81)	9	.666 (16.92)	.984 (24.99)	1.213 (30.81)
15	.971 (24.66)	1.312 (33.32)	1.541 (39.14)	15	.994 (25.25)	1.312 (33.32)	1.541 (39.14)
25	1.511 (38.38)	1.852 (47.04)	2.088 (53.04)	25	1.534 (38.96)	1.852 (47.04)	2.088 (53.04)
37	2.159 (54.84)	2.500 (63.50)	2.729 (69.32)	37	2.182 (55.42)	2.500 (63.50)	2.729 (69.32)
50	2.064 (52.43)	2.406 (61.11)	2.635 (66.93)	50	2.079 (52.81)	2.406 (61.11)	2.635 (66.93)

Unit: inch/mm

#### Mounting Options



#### PLUG CONTACT



#### SOCKET CONTACT

