

POWER HEADER

.156" [3.96] CENTERLINE WITH LOCKING FEATURE OPTION



SPECIFICATIONS

Material:

Insulator: Nylon 6/6 rated UL 94V-0
Color: Natural
Contacts: Brass

Plating:

100 µin tin-lead over 50 µin copper underplate

Electrical:

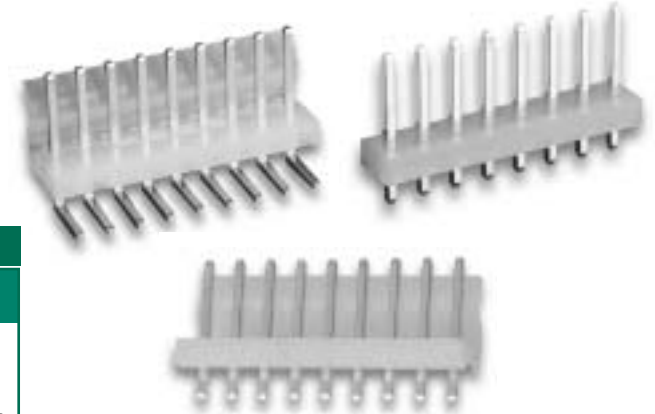
Operation voltage: 250 VAC max
Current rating: 7 Amp max
Contact resistance: 50 mΩ max
Insulation resistance: 5000 MΩ min @ 1500 VDC between adjacent contacts (75°F and 50% R.H.)
Dielectric withstanding voltage: 1500 VDC min rms (sea level)



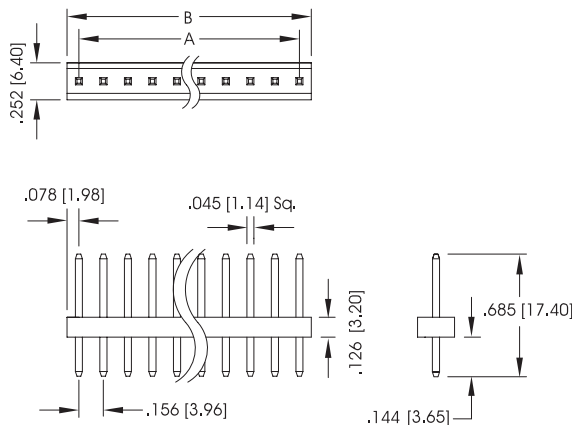
ORDERING INFORMATION

choose one from each category as shown in sample below

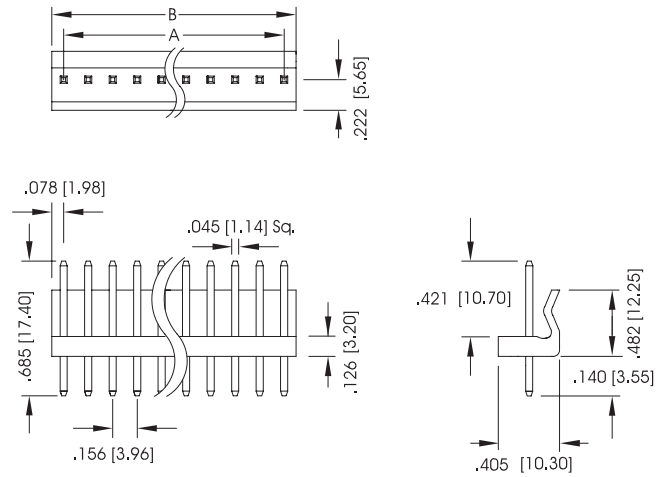
PHK	10	S1
Series	Positions	Locking
PHK - .156" Power Header	02 thru 15	S1 - Straight with locking feature S2 - Straight without locking feature R1 - Right angle with locking feature R2 - Right angle without locking feature



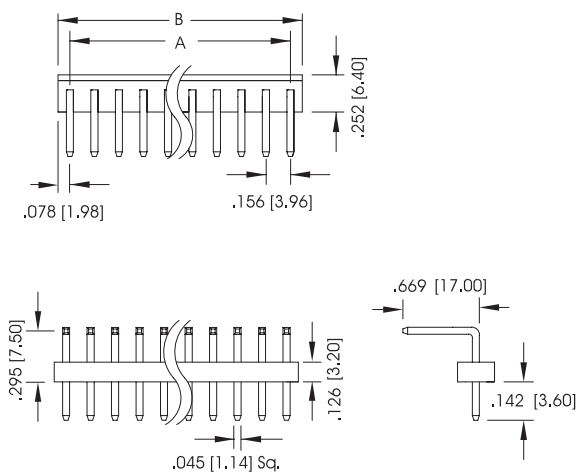
PHK - XX - S2



PHK - XX - S1



PHK - XX - R2



PHK - XX - R1

